

CM-2400 INSULATION BLOWING MACHINES

The CM-2400 serie machines provides an **economical, high production** all fibers machine with low power requirements and reduced weight/size for truck/trailer system.

CM-2400 blowing insulation machines is for the professional contractor who has many insulation jobs. High capacity makes it the **ultimate allround machine**. Size does matter - less is more with this unique insulation machine.

- The unique design and minimal moving parts provide a machine with **low maintenance requirements** and easy to service.
- This compact, **robust machine** with its various options, will out-perform and out-last any machine in its class. All Applications: Attics, Dense pack, Sidewalls, Wall/Commercial/Fireproofing – Spray On
- The **compact and slim design** takes up less space, offering you a machine easy to transport in a truck or trailer to the job-site, and set-up to spray or blow in minutes.



**Excellent Performance with
All Types of
Blowing Insulation Materials**

Production Rates:

Cellulose 1633 kg/hour

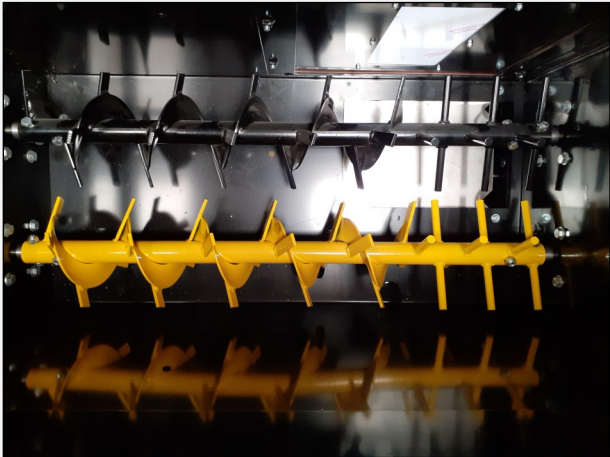
Fiberglas 635 kg/hour

Rockwool 907 kg/hour

* Notice airlock size 30,5 cm x 40,6 cm



Features and Benefits



Dual Scalping Augers

Dual scalping augers enhance feed and eliminate bridging in hopper.

Dual stainless SlideGate controls for metering recycle and dry fiber.

Powerful sizing of axles and bearings guarantees long service life.

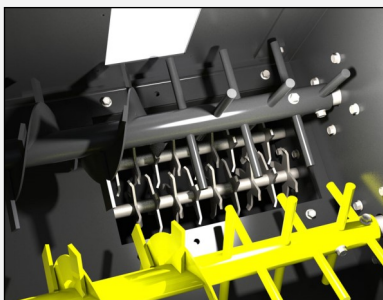
6 chamber airlock provides constant material flow - without pulsating.



Drive Motor

1,5 hp/1,12 kW or 2 hp/1,49 kW motor drives the entire machine.

Separated gearbox and engine makes servicing easy and economical.



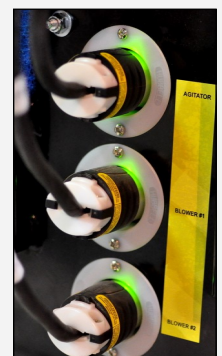
High speed turbo-shredder maximizes fiber conditioning and production.

Option: Long Distance Wireless Remote System



Lid and the dust curtain minimize dust outlets and provides better working environment.

LED power plugs for quick electrical troubleshooting.



Powerful Technology

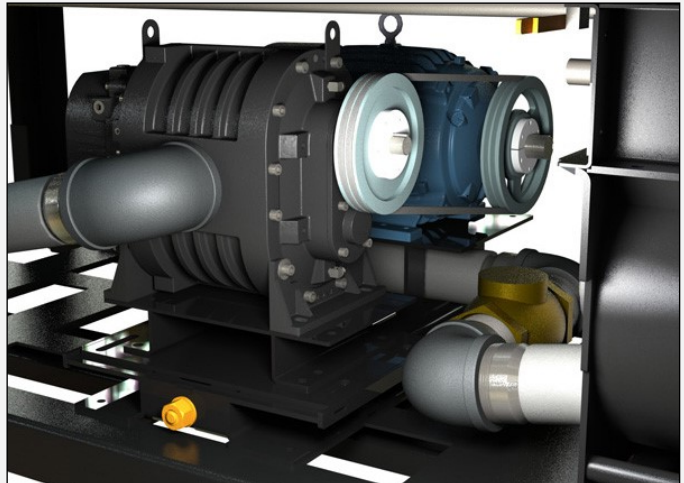
PD Blower

Positive Displacement (PD) blower with 5 hp.

Superior performance and long life.

The combination of large material hopper and PD blowers ensures high material capacity.

Constant high pressure and airflow, no matter hose sizes and lengths - Ideal for extra long hose lengths and high material elevation.



4 Centrifugal Blowers

Blower box set-up that allows you to adjust the number of blowers and airflow required for the job.

Individual on/off function of each blower - saving power.

Efficient machine with 230 Volt connections.

High blowing capacity, 960 m³/hour with 4 blowers.

Low price for such a powerful machine.



Side or Front Mount Options in Truck or Trailer



CM-2400 Standard

Standard

The efficient design of the maintenance access areas along with the modular component design of the drive system, blower module, and quick-release 'slide-out' airlock module; offer a simple, fast method to service the machine.

The control functions are simple and easy to understand. The manual thermal overloads provide a component that is easily re-set, reliable, and most importantly - safe.

The strong engine and high blowing power ensures long hoses and elevation is not a problem.

CM-2400 comes with full hopper extension.

Additional Machine Options:

- Hopper Top Lid with Curtains
- Divided hopper extension and material gate is available for spray fiber (pictured).



Weights and Measures

Weight:

405 kg with 4 Blowers, 230 Volt

542 kg with 5 hp PD Blower, 400 Volt

Dimensions (length x width x height):

158 cm x 59 cm x 130 cm

189 cm –207 cm with Hopper Extension

Hopper Capacity:

0.42 m³

0.74 m³ with Full Hopper Extension

6 Chamber Airlock:

Size: diameter x length

30.5 cm x 40.6 cm, 3" / 76 mm output tube

Technical data

Drive Motor:

1.5 hp / 1.12 kW or 2 hp / 1.5 kW

Blower Options:

7 amp. - 240 m³/hour per Blower | 960 m³/hour with 4 blowers

5 hp PD Blower - 306 m³/hour

Airlock pressure:

440 mbar

Power Requirements:

10/10/10 amp., 230 Volt, triple input, 4 Blowers

10 amp., 400 Volt, 3 phases, 5 hp PD Blower

***PD = Positive Displacement Motor**

CM-2400 Vac-Hood

Vac-Hood

Economical with low power requirements.

Innovative Vacuum Hood provides a multi-function machine system.

The uniquely designed multifunction machine for wet fiber spraying. Spray fiber is ideal for moist level controlling in metal sheet constructions and for fireproof spraying or for insulating low basements.

Separate recycle and dry feed-gate control for precise metering of fibers.

The machine is perfect at balancing and metering spray on fibers.



Weights and Measures

Weight:

544 kg with 4 Blowers, 230 Volt

694 kg with 5 hp PD Blower, 400 Volt

Dimensions (length x width x height):

173 cm x 59 cm x 186 cm with Hopper Extension

Hopper Capacity:

Dry: 0.48 m³ with Hopper Extension

Recycle: 0.2 m³

Total: 0.68 m³ with Full Hopper Extension

6 Chamber Airlock:

Size: diameter x length

30.5 cm x 40.6 cm, 3" / 76 mm output tube

Technical data

Drive Motor:

2 hp / 1.49 kW

Blower Options:

7 amp. - 240 m³/hour per Blower | 960 m³/hour with 4 blowers

5 hp PD Blower - 306 m³/hour

Airlock pressure:

440 mbar

Power Requirements:

10/10/10 amp., 230 Volt, triple input, 4 Blowers

10 amp., 400 Volt, 3 phases, 5 hp PD Blower

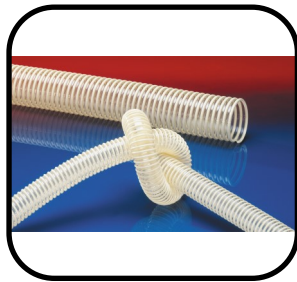
**PD = Positive Displacement Motor*



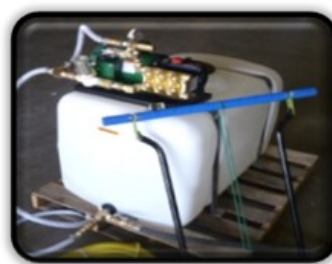
Machine Accessories



Hose Reels



Hoses & Fittings



Water Tanks



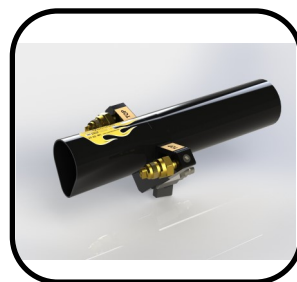
Generators



Water Pumps



Wall Scrubbers



Spray Equipment



Vacuums

Customer Support: Call +45 54 60 90 06 - mail: info@coolmachinesurope.com

Cool Machines Inc.

Fiber Machines - Cutting Edge Cool

BY **DAVE KRENDEL**

www.coolmachinesurope.com